

Accessories Heater Kits

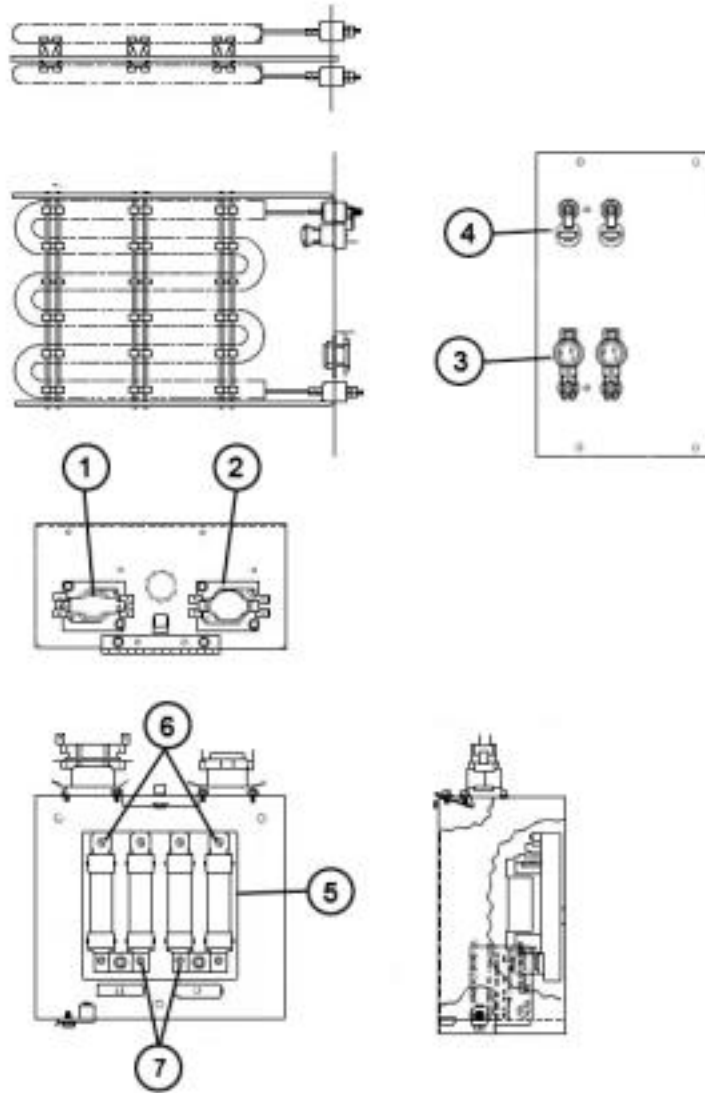


RXQJ-C10J

Parts List
01-June-2022

*This parts list is current as of the above revision date.
See <http://www.rheempartslists.net/92-42805-RXQJ-C10J.pdf> for the current revision.*

No.	Notes	Part Description	Part No.
		FOR UNITS WITH SERIAL NUMBER BEGINNING WITH PA or PD, Before Date Code 1015:	
1		Sequencer (1)	425072
2		Sequencer (1)	425074
3		Limit (2)	425071
5		Fuse Block	455123
6		Time Delay Fuse (2)	442038
7		Fuse (2)	442034
		FOR UNITS WITH SERIAL NUMBER BEGINNING WITH PA or PD, On or After Date Code 1015:	
1		Sequencer (1)	PD425126
2		Sequencer (1)	PD425128
3		Limit (2)	425071
4		Thermal Fuse (2)	PD447400
5		Fuse Block	455123
6		Time Delay Fuse (2)	442038
7		Fuse (2)	442034
		FOR UNITS WITH SERIAL NUMBER BEGINNING WITH PN:	
		Sequencer (1) (Single Pole: HT 1-30, CT 30-60)	425077
		Sequencer (1) (Double Pole: HT 1-30, CT 30-60)	PD425078
		Limit (2)	470031
		Circuit Breaker (2) - 60 Amp, 2 Pole	42-23201-01



Drawing of RXQJ C010J